

Prénom :

Les compléments

à **10** et à **20**

1

3



2

4

6



5



Complète.

$$\underline{\hspace{2cm}} + 6 = 10$$

$$\underline{\hspace{2cm}} + 10 = 20$$

$$\underline{\hspace{2cm}} + 7 = 10$$

$$\underline{\hspace{2cm}} + 19 = 20$$

$$\underline{\hspace{2cm}} + 2 = 10$$

$$\underline{\hspace{2cm}} + 15 = 20$$

$$\underline{\hspace{2cm}} + 2 = 10$$

$$\underline{\hspace{2cm}} + 5 = 20$$

$$\underline{\hspace{2cm}} + 10 = 10$$

$$\underline{\hspace{2cm}} + 8 = 20$$

$$\underline{\hspace{2cm}} + 1 = 10$$

$$\underline{\hspace{2cm}} + 12 = 20$$

$$\underline{\hspace{2cm}} + 4 = 10$$

$$\underline{\hspace{2cm}} + 7 = 20$$

$$\underline{\hspace{2cm}} + 3 = 10$$

$$\underline{\hspace{2cm}} + 16 = 20$$



Complète.

$2 + \underline{\quad\quad} = 10$

$0 + \underline{\quad\quad} = 20$

$9 + \underline{\quad\quad} = 10$

$14 + \underline{\quad\quad} = 20$

$5 + \underline{\quad\quad} = 10$

$20 + \underline{\quad\quad} = 20$

$3 + \underline{\quad\quad} = 10$

$9 + \underline{\quad\quad} = 20$

$4 + \underline{\quad\quad} = 10$

$16 + \underline{\quad\quad} = 20$

$8 + \underline{\quad\quad} = 10$

$12 + \underline{\quad\quad} = 20$

$1 + \underline{\quad\quad} = 10$

$7 + \underline{\quad\quad} = 20$

$7 + \underline{\quad\quad} = 10$

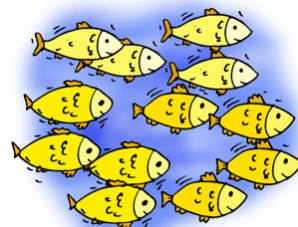
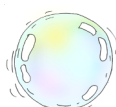
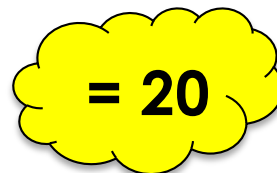
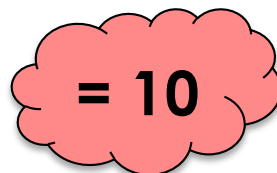
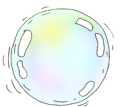
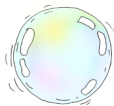
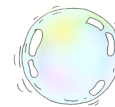
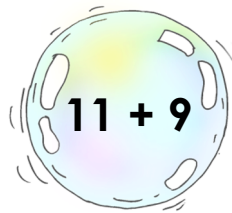
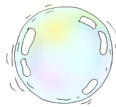
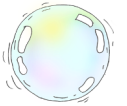
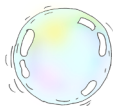
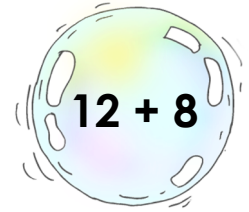
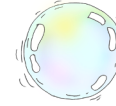
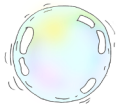
$15 + \underline{\quad\quad} = 20$

Fiche 3



Colorie les bulles dont la réponse est 10 en rouge.

Colorie les bulles dont la réponse est 20 en jaune.





Chaque nénuphar est égal à 10.



$$3 + \dots$$

$$9 + \dots$$

$$4 + \dots$$

$$1 + \dots$$

$$6 + \dots$$

$$7 + \dots$$



$$5 + \dots$$

$$2 + \dots$$

Chaque nénuphar est égal à 20.



$$11 + \dots$$

$$9 + \dots$$

$$14 + \dots$$

$$0 + \dots$$

$$6 + \dots$$

$$17 + \dots$$



$$15 + \dots$$

$$2 + \dots$$

Fiche 5



Entoure les additions dont la réponse est 10 en rouge.

Entoure les additions dont la réponse est 20 en jaune.

$14 + 4$

$13 + 7$

$10 + 10$

$2 + 7$

$8 + 12$

$9 + 3$

$3 + 7$

$15 + 6$

$5 + 5$

$3 + 14$

$7 + 14$

$7 + 13$

$10 + 7$

$2 + 8$

$9 + 1$

$4 + 6$

Complète les calculs.

$7 + \dots = 10$

$\dots + 3 = 10$

$9 + \dots = 10$

$\dots + 5 = 10$

$1 + \dots = 10$

$12 + \dots = 20$

$\dots + 10 = 20$

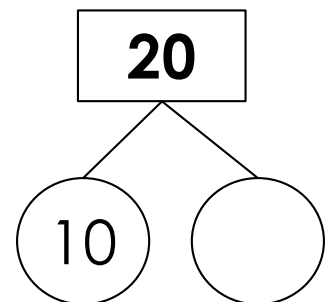
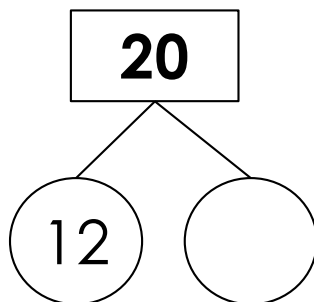
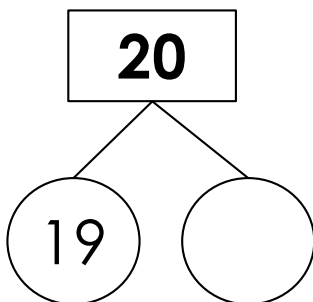
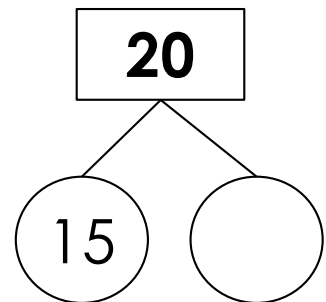
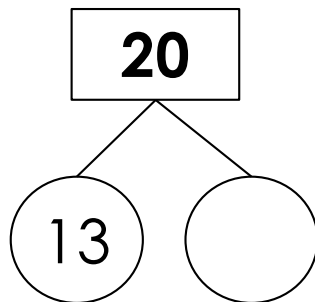
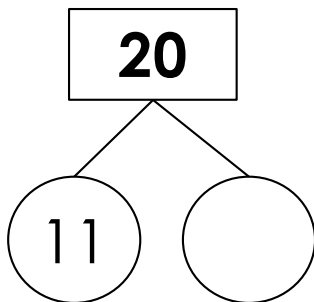
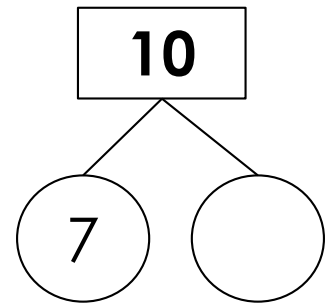
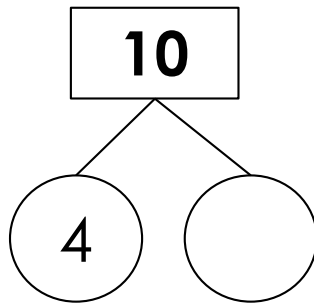
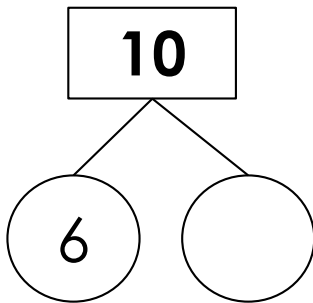
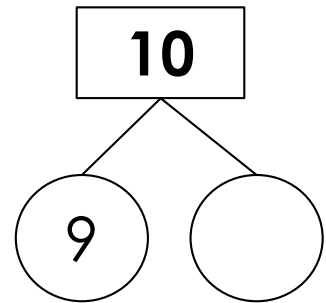
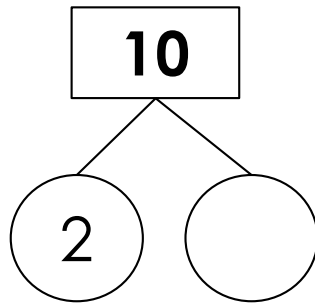
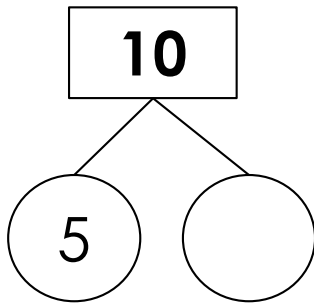
$7 + \dots = 20$

$\dots + 16 = 20$

$19 + \dots = 20$



Complète les duos.



Révision



Complète les calculs le plus rapidement possible.

$7 + \dots = 10$

$18 + \dots = 20$

$2 + \dots = 10$

$4 + \dots = 20$

$1 + \dots = 10$

$12 + \dots = 20$

$6 + \dots = 10$

$3 + \dots = 20$

$0 + \dots = 10$

$11 + \dots = 20$

$9 + \dots = 10$

$5 + \dots = 20$

$3 + \dots = 10$

$16 + \dots = 20$

$\dots + 5 = 10$

$\dots + 6 = 20$

$\dots + 1 = 10$

$\dots + 13 = 20$

$\dots + 2 = 10$

$\dots + 17 = 20$

$\dots + 9 = 10$

$\dots + 14 = 20$

$\dots + 2 = 10$

$\dots + 8 = 20$

$\dots + 0 = 10$

$\dots + 2 = 20$

$\dots + 4 = 10$

$\dots + 9 = 20$